



CORE GAP COVER BENEFITS 2024



INSURED BY



www.sanlam.co.za

Statutory notice:

This is not a **Medical Scheme** and the cover is not the same as that of a **Medical Scheme**.
This **Policy** is not a substitute for **Medical Scheme** membership.
Sanlam Gap is administered by Kaelo Risk (Pty) Ltd is an authorised financial services provider (FSP 36931).
Kaelo Risk (Pty) Ltd holds preference shares in Centriq Insurance Company Limited.
Insurance Products are insured by Centriq Insurance Company Limited ("Centriq") a licensed non-life insurer and authorised Financial Services Provider (FSP 3417).

Bridging the gap with confidence



Financial confidence is a feeling of certainty; knowing you are prepared for the challenges you may face – including poor health. We can't promise you a life free of disease however, with Sanlam Gap Cover, we can promise you peace of mind knowing that we can provide you with security regardless of your current medical scheme.

Why choose Sanlam Gap?

The high cost of specialist **treatments** and above-inflation increases means that more people are at risk of being excluded from the quality medical care they need and deserve. Sanlam Gap gives you the freedom of choosing a doctor or specialist that will give you the best care, regardless of your **Medical Scheme** and regardless of rates. We have you covered for the best care, without the stress of having to worry about additional bills.

Core cover made simple for you

Sanlam Gap Cover is a non-life insurance product that provides an extra layer of financial protection for those who already have medical aid. It helps to cover certain shortfalls between what your **Medical Scheme** will pay and the rates charged by in-hospital medical specialists.

MEDICLINIC

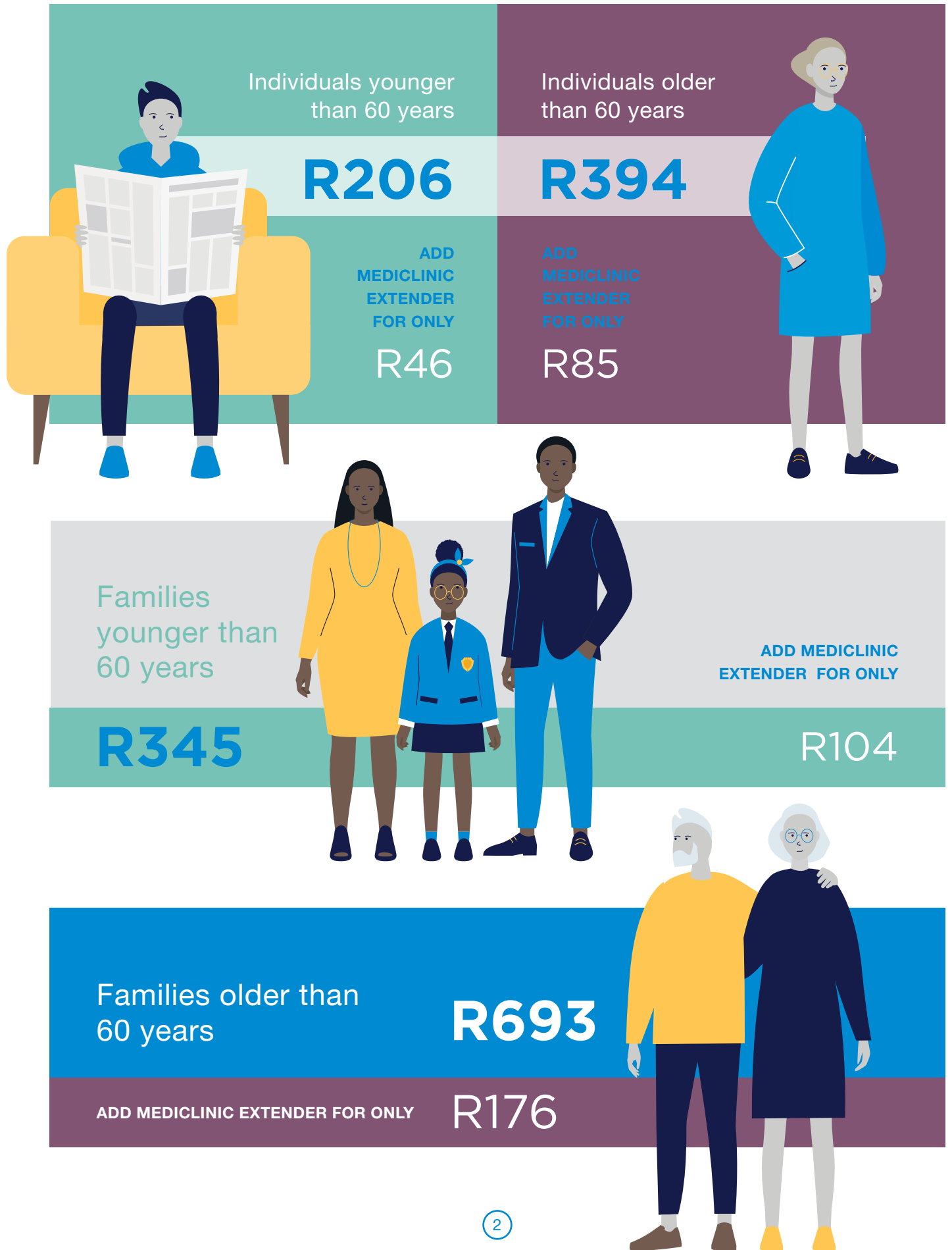
Close the Gap even further with the new Mediclinic Extender Benefit

You can close the gap even more, thanks to the **Mediclinic Extender Benefit**.

The Mediclinic Extender Benefit offers additional cover for **Medical Scheme** co-payments, private ward cover, and a cancer lump sum benefit, etc. These benefits ensure that you enjoy personalised treatment at all Mediclinic hospitals and is the perfect add-on to your **Sanlam Gap Cover**.

◉ [See page 4 for more](#)

Monthly premiums 2024



Key Benefits 2024 for Fedhealth

Health Service	Benefit	Limit
Key Benefits*	<p>The following Benefits are defined as Key Benefits:</p> <ul style="list-style-type: none"> ▶ Tariff Shortfalls ▶ Co-Payments and Deductibles ▶ Shortfalls from Sub-Limits ▶ Oncology Tariff Shortfalls ▶ Oncology Co-Payments ▶ Penalty Co-Payment 	<p>Key Benefit Limit:</p> <p>The overall maximum Benefit payable for the Key Benefit clauses of this Policy will be limited to the statutory maximum of R198 660 per Insured Party per annum.</p> <p>Prescribed Minimum Benefits (PMB) procedures are covered under Key Benefits and are subject to clinical review by our Specialist third party, MedClaim Assist.</p>
Tariff Shortfalls	<p>This Benefit provides an additional three times (300%) for charges above the Medical Scheme rate, covering shortfalls for healthcare service providers such as surgeons, radiologists, pathologists and physiotherapists. It also includes cover for Prescribed Minimum Benefits (PMBs).</p>	<p>An additional three times (300%) for charges above the Medical Scheme rate subject to the overall annual limit.</p>
Co-Payments and Deductibles	<p>The Benefit payable is equal to a fixed or upfront rand value deductible or co-payment amount as defined in the rules by the Insured Party's Medical Scheme. This Benefit will include cover for defined, fixed value co-payments applied by the Medical Scheme.</p>	<p>Limited to R10 600 per Insured per Policy.</p>
Shortfalls from Sub-Limits	<p>This Benefit will apply for services provided during a Hospital Episode, where the charges relating to the service supplied have exceeded the Sub-limit benefit paid by the Insured Party's Medical Scheme.</p>	<p>The Benefit payable is equal to the charged amount, less the amount paid by the Insured Party's Medical Scheme, subject to a maximum limit per Insured Event of R31 800.</p>
Oncology Tariff Shortfalls	<p>Benefits relating to this clause will only be paid in respect of oncology and related Treatment, that has been approved by the Insured Party's Medical Scheme, for the purposes of treating cancer. This Benefit requires your Medical Scheme to pay their portion of the claim from your hospital/risk benefit.</p>	<p>Any Benefit provided for charges above the Medical Scheme Tariff shall be limited to an additional three times (300%), subject to the overall annual limit per Insured per Policy.</p>
Oncology Co-Payments	<p>The Benefit payable is equal to the co-payment applied once related costs have exceeded the specific threshold defined by the Medical Scheme.</p>	<p>Limited to the 20% oncology related co-payment applied by your Medical Scheme. Up to the maximum of R31 800.</p>
Penalty Co-Payment	<p>Cover for penalty Co-payments or Deductibles, up to a maximum of 30%, for the voluntary use by an Insured Party of a non-Network Hospital.</p> <p>Any other liability arising against an Insured Party from a Penalty, as defined, that is not a fixed value Penalty co-payment defined in the rules of the Insured Party's Medical Scheme, remains an exclusion.</p>	<p>One event covered per annum. Up to the maximum of R11 660.</p>

*The Benefit names listed throughout this document are for reference purposes only and will not form part of any Benefit definition.



Mediclinic Extender Benefit

The Mediclinic Extender Benefits applies to members who have opted to include the option on their Sanlam Gap Comprehensive Policy. Confirmation thereof would reflect on the member's Policy Schedule.

Health Service	Benefit	Limit	
HEALTHCARE BENEFITS	Casualty Illness	Benefits relating to this clause will only be paid in respect of Emergency outpatient services that are provided within a casualty ward of a Hospital . The Benefit is only payable in the event of after-hours Treatment in an Emergency situation. After-hour emergency illness only at a Mediclinic for all Insured Parties covered (Mondays to Fridays: 6pm – 8am. All-day Saturdays, Sundays & public holidays).	Subject to a maximum of two such events per Annum and a maximum of R2 650 per Insured Event .
	Specialist Benefit	Specialist Benefit - Out-of-hospital This Benefit will become payable when your Medical Scheme has paid a portion of your out of hospital specialist claim. We will cover the shortfall thereof.	Up to R5 200 per Insured Party per Annum , subject to the Overall Annual Limit.
	Private Ward	Cover for the difference between the cost of a general ward and a private ward. Payable only in the event of confinement (childbirth) admissions. Only at a Mediclinic hospital (if available).	Subject to a maximum of one event per Insured Party per Annum and a maximum of R5 200 subject to the Overall Annual Limit.
	Cancer Lump Sum Pay Out	Benefits relating to this clause will only be paid if cancer is confirmed by the oncologist or pathologist as at least the medical equivalent of "Stage 2" or higher cancer.	Benefit is limited to one claim per Insured Party and is only payable on first-time diagnosis as a lump sum of R10 600 .
CO-PAYMENT BENEFITS	Cashless Co-payment	Benefits relating to this clause will only be paid in respect of defined diagnostic procedures that occurred during an Insured Event . The Benefit payable is equal to the fixed value Deductible or Co-payment amount, as defined in the rules of the Insured Party's Medical Scheme. Benefit is directly payable to the Mediclinic Pre-authorisation letter required.	Unlimited subject to the Overall Annual Limit. Only at a Mediclinic facility.
	Cashless Penalty Co-payment	Notwithstanding exclusion related penalties, the Insurer will pay a fixed value Penalty Co-payment or Deductible , or a percentage Penalty Co-payment that does not exceed 30%, for the voluntary use by an Insured Party of a Mediclinic facility that is not part of their Medical Scheme Hospital Network .	Unlimited only at a Mediclinic facility subject to a maximum of R17 500 per event and subject to the Overall Annual Limit.

***How to pre-authorise your cashless co-payments:**

Kindly complete a pre-authorisation form which can be found on the website:

https://documents.sanlam.co.za/2024_Sanlam_Gap-Mediclinic-Extender-Cashless-Form.pdf

and submit to sanlamauth@kaelo.co.za within a minimum of 48 working hours prior to your procedure or admission. In the event of an emergency, a pre-authorisation form needs to be completed post procedure within 3 working days.

***All other benefits claimable via the standard claiming process -**

[click here](#)



How to Submit your Claim

A seamless claims process has been introduced to allow for the automatic processing of your claims, and you will no longer be required to submit a separate claim form in addition to the claim that has been submitted to your **Medical Scheme**. Sanlam Gap has developed a seamless integration system for its members on selected schemes to seamlessly integrate with your **Medical Scheme**, healthcare providers and its contracted third parties to assist with the efficiency of the claims process.

Alternatively, you are able to decline this process and access the claim form by clicking on this [link](#) and download the form. Kindly email your completed claim form with supporting documentation to sanlamclaims@kaelo.co.za.

Please note that this is not an automatic process, and you will be required to submit a separate claim form in addition to the claim that has been submitted to your **Medical Scheme**.

When submitting the claim form, you will also need to provide a copy of the relevant specialists' accounts, **Hospital** accounts and **Medical Scheme** statement showing the processing of the accounts and the shortfall. Please note that the claim will not be processed until all documents have been received. You have **6 months** from the end of the **Insured Event** to submit your claim and relevant documentation. Any claim received for the first time after the 6 month period has expired, will not be honoured.

Claims can be e-mailed to sanlamclaims@kaelo.co.za.

Claims can also be captured online: www.kaelo.co.za/quick-links

Once received, **your claim will be processed** and if all requirements have been met, the **Benefit** amount will be paid within **7 to 10 working days**.

Please also remember that this **Policy** does not form part of your **Medical Scheme** and your **Medical Scheme** call centre will thus not be able to assist you with any questions in this regard.

Please direct all queries to our **Customer Care Centre** on **0861 111 167**.

This brochure, which is also the Detail of Services and Benefits annexure to your Policy, should be read together with your Policy and Policy Schedule as it forms part of your agreement with the Insurer and the Underwriting Manager (UMA). Please ensure that you familiarise yourself with all the terms and conditions contained in all the documents you have received.

Contact Information

Sanlam Gap Cover

T 0861 111 167

E sanlaminfo@kaelo.co.za

www.sanlam.co.za



2 Strand Road, Bellville 7530 | PO Box 1, Sanlamhof 7532, South Africa

Sanlam Life Insurance Limited Reg no 1998/021121/06.
Licensed Financial Services and Registered Credit Provider (NCRCP43).

T +27 (0)21 947 9111
F +27 (0)21 947 8066

www.sanlam.co.za

